

## Press Release

### **Euromap GmbH Completes Delivery of IRS Ortho Products from 2011 for CORE\_001 of the GMES Data Warehouse**

**Euromap GmbH, the exclusive supplier of Indian Remote Sensing data in Europe and a GMES Contributing Mission Entity, has completed the delivery of ortho products from IRS data acquired during 2011 for CORE\_001 of the GMES Data Warehouse to ESRIN.**

Neustrelitz, Germany, November 3, 2011: Euromap GmbH, the exclusive supplier of Indian Remote Sensing (IRS) data in Europe, and the European Space Agency (ESA), responsible for the GMES data access as part of the GMES Space Component, announced that the delivery of ortho products and system corrected products from IRS-P6 Resourcesat-1 data acquired during 2011 was completed today.

The delivery consisted of 1221 system corrected and ortho products and covers about 3 Mio km<sup>2</sup> cloud-free European territory. It significantly exceeds the 2 Mio km<sup>2</sup> that are contractually due to be delivered by November 15, 2011 and accounts for approx. 52% of the first coverage of the Optical High Resolution Pan-European Coverages 2011/2012 of the GMES Data Warehouse (CORE\_001).

A corresponding GMES Space Component - Data Access - Data Warehouse (GSC-DA DWH) contract, which covers the supply of data from the IRS-P6 Resourcesat-1, Resourcesat-2, IRS-P5 Cartosat-1, IRS-1C and IRS-1D missions and the improvement of interfaces, was signed in August 2011 between ESA and a Euromap-led consortium, with the German Aerospace Centre (DLR) working as a sub-contractor.

Frithjof Barner, Technical Director of Euromap, commented: "Thanks to the installation of an improved version of the CATENA ortho processor developed by DLR's Remote Sensing Technology Institute within the Euromap premises, we were able to better integrate and monitor the processor, which led to significantly reduced processing times. Having approx. 57% of the area acquired cloud-free within the region-specific acquisition windows with Resourcesat-1 during 2011 and planning the installation of the Resourcesat-2 ground segment during the winter months, we look forward to complete the first coverage for CORE\_001 during 2012."

#### **About Euromap: [www.euromap.de](http://www.euromap.de)**

Euromap Satellitendaten-Vertriebsgesellschaft mbH was founded in 1996 as a 100% owned subsidiary of GAF AG in order to create an efficient commercial structure to receive, archive and market Earth observation satellite data in Germany. Experience and expertise in data reception and processing is optimally combined in the company with marketing and distribution activities – thus providing the essential conditions for

supporting a growing user-market for remote sensing data. Euromap GmbH is located in Neustrelitz, Germany.

**About ESA / ESRIN: [http://www.esa.int/esaMI/ESRIN\\_SITE/index.html](http://www.esa.int/esaMI/ESRIN_SITE/index.html)**

ESRIN, the ESA Centre for Earth Observation, is one of the five ESA specialised centres situated in Europe. Located in Frascati, a small town 20 km south of Rome in Italy, ESRIN was established in 1966 and first began acquiring data from environmental satellites in the 1970s. Since 2004, ESRIN has been the headquarters for ESA's Earth Observation activities.

ESA is developing and managing the Space Component for the GMES initiative. The Space Component includes a series of five space missions called 'Sentinels', which are being developed by ESA specifically for GMES. Besides specifically developed Sentinel satellites, ESA manages access to other GMES Contributing Missions. These Contributing Missions include both existing and new satellites, whether owned and operated at European level by either EUMETSAT, privately or publicly in ESA Member States. They also include data acquired from non-European partners. The Space Component forms the European contribution to the worldwide Global Earth Observation System of Systems (GEOSS).

**About IMF: <http://www.caf.dlr.de/caf/institute/imf>**

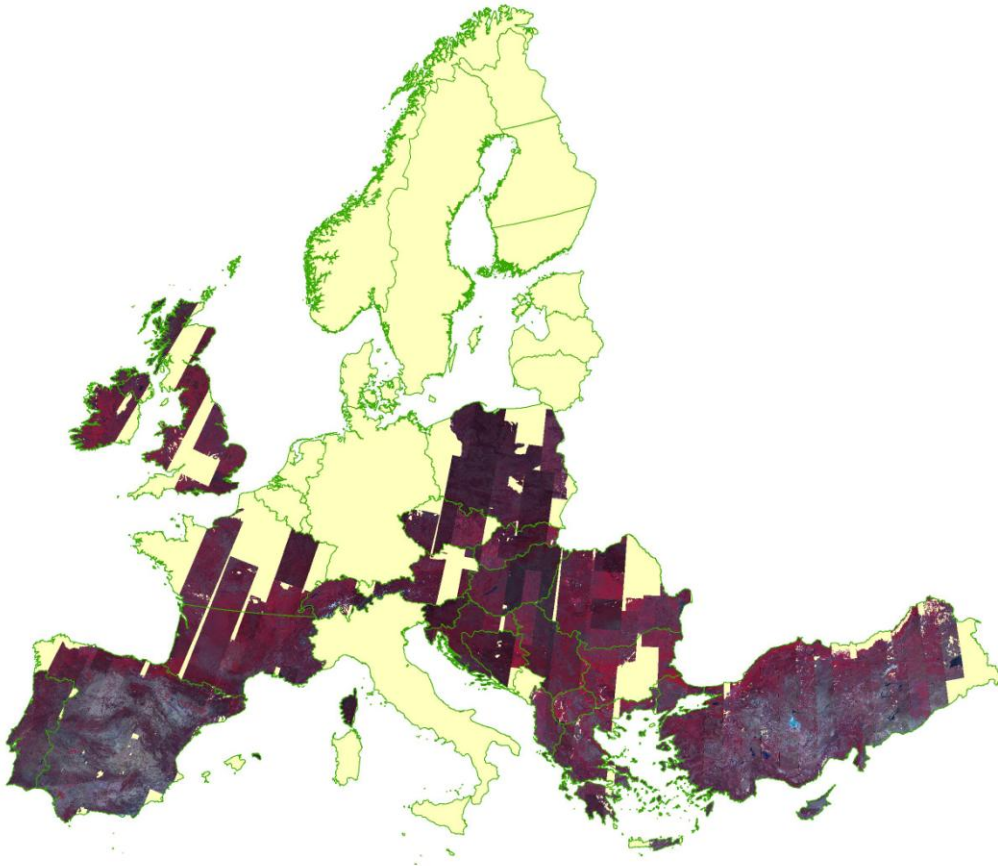
The Remote Sensing Technology Institute (IMF) is an institute of the German Aerospace Centre (DLR). Together with the centre's German Remote Sensing Data Center (DFD), it comprises DLR's Earth Observation Center (EOC), which coordinates DLR's activities relating to Earth observation data from satellites and aircraft. IMF focuses on the development of algorithms and methods for the extraction of geoinformation from remote sensing data.

For more information, please contact:

Euromap GmbH  
Phone +49 3981 4883 0  
[info@euromap.de](mailto:info@euromap.de)

German Aerospace Centre  
Remote Sensing Technology Institute  
Phone +49 8153 28 2757  
[Peter.Reinartz@dlr.de](mailto:Peter.Reinartz@dlr.de)

German Aerospace Centre  
German Remote Sensing Data Centre  
Department: National Ground Segment  
Phone +49 3981 480 111  
[Holger.Maass@dlr.de](mailto:Holger.Maass@dlr.de)



**Figure 1: Quick look mosaic of LISS-III data acquired in region specific acquisition windows and delivered before November 3, 2011 for CORE\_001 coverage 1**